

Chouteau

Caring Communities

Data Book **September 2012**

A review and analysis of the community surrounding the Caring Communities site located at Chouteau Elementary School in Kansas City, MO



Introduction

About Caring Communities

Caring Communities was developed by the Local Investment Commission (LINC) to fulfill the role once played by the courthouse square: a place where the community gathers together, shares ideas, and holds neighborhood events. The growth of Caring Communities reflects increasing national interest in creating “community schools.”

The LINC Caring Communities effort, which began in 1992, has grown to more than 80 sites in seven school districts in Kansas City and Jackson County, MO. LINC’s school district partners include Kansas City, Independence, Fort Osage, North Kansas City, Hickman Mills, Grandview and Center. Other partners include charter schools, local government, state agencies, and community organizations.

What is a Community School?

A community school is both a place and a set of partnerships between the school and other community stakeholders which leads to improved student learning, stronger families and healthier communities. Community schools are open to everyone—all day, including evenings and weekends. Community-based organizations or public institutions often work as lead agencies in community schools, helping to mobilize community assets and support students success.

Coalition for Community Schools

www.communityschools.org

About This Book

The Chouteau Caring Communities Data Book is intended to provide useful information for decision-makers of the Chouteau community — parents, neighbors, site council members, staff and the general public. We hope the facts, figures and resources contained in this book will help these decision-makers to better understand their neighborhoods and identify needs and opportunities for better coordination of services. We hope this book will help build on the success of Caring Communities and help it thrive in the future.

To request additional copies of this book, or to suggest improvements for future editions of this book, contact the Chouteau Caring Communities Site Coordinator. The book is also available to download for free at www.kclinc.org/chouteau



Chouteau Caring Communities Established 2010

Adrian Wilson, Site Coordinator
3701 N. Jackson Ave., Kansas City, MO 64117
(816) 278-6063
awilson@kclinc.org

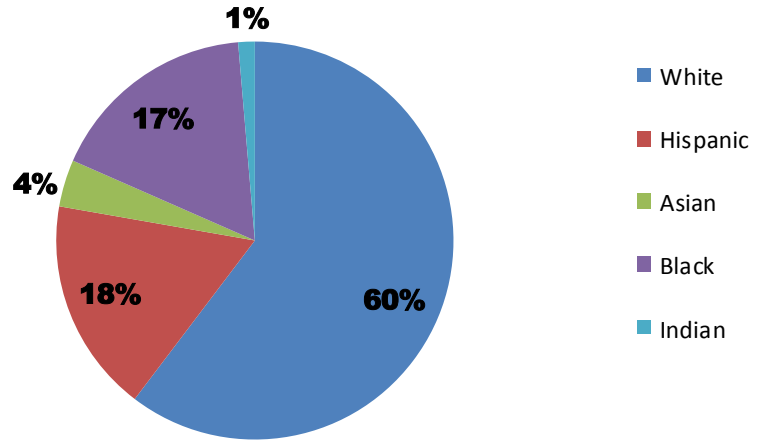
Education

Chouteau Elementary

Ms. Angela Cordier, Principal

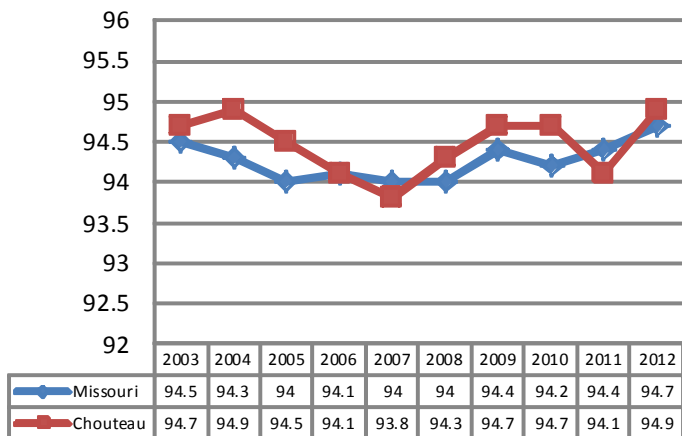
3701 N. Jackson Ave.
 Kansas City, MO 64117
 (816) 413-6760

2011 Student Demographics



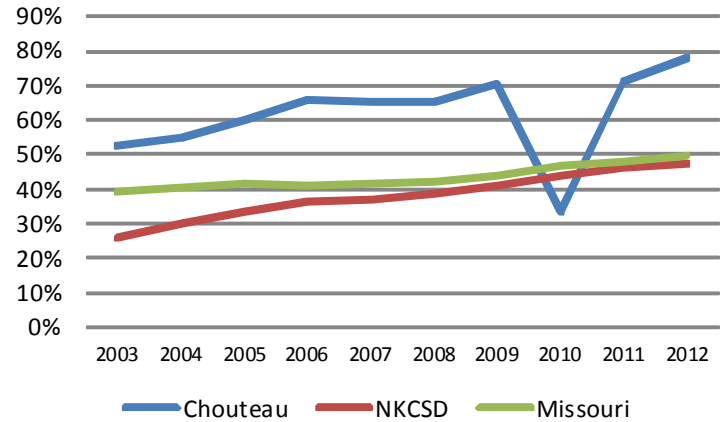
Source: Missouri Department of Elementary and Secondary Education

2012 Student Attendance Rate



Source: Missouri Department of Elementary and Secondary Education

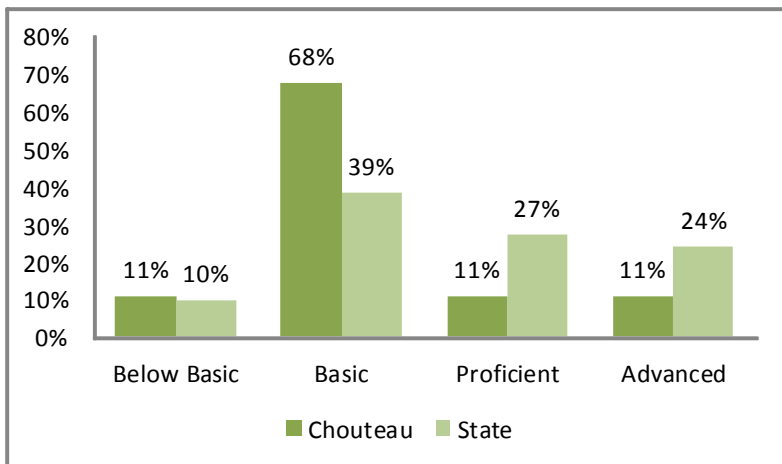
Free/Reduced Lunch



Source: Missouri Department of Secondary and Elementary Education

2012 Missouri Assessment Program (MAP)

5th Grade Science

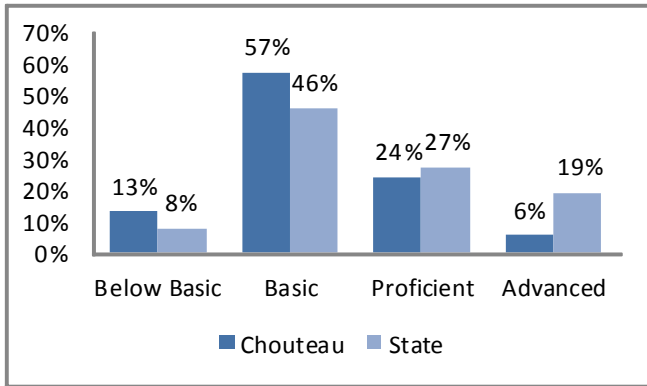


Source: Missouri Department of Elementary and Secondary Education

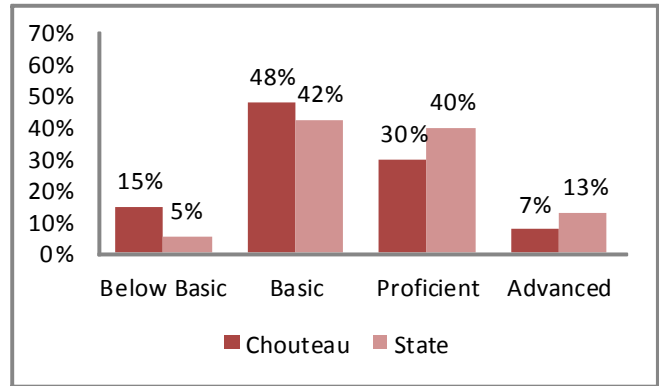
Education

2012 Missouri Assessment Program (MAP), continued

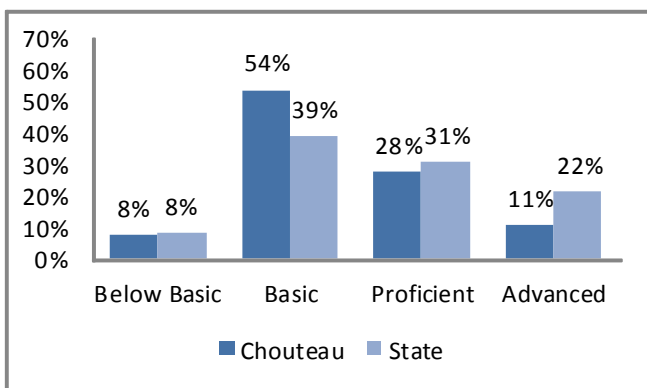
3rd Grade Communication Arts



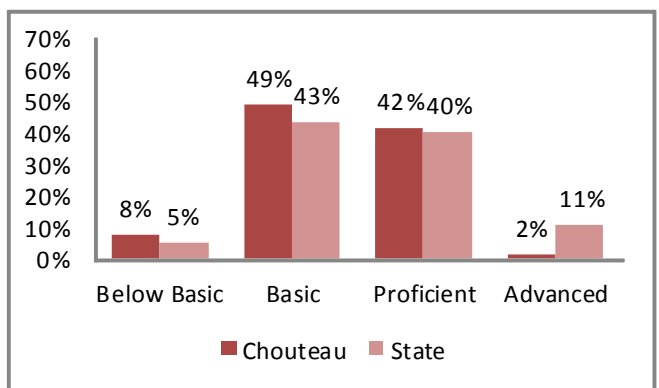
3rd Grade Mathematics



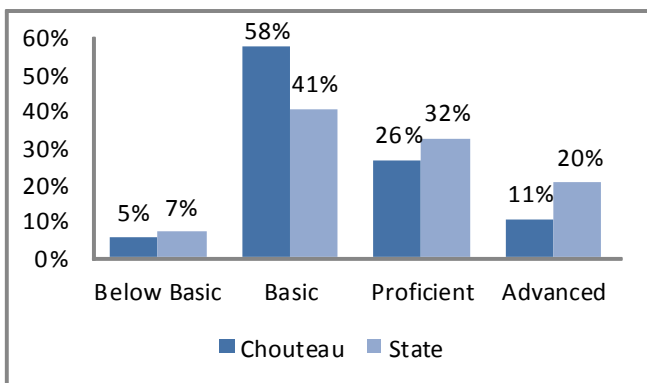
4th Grade Communication Arts



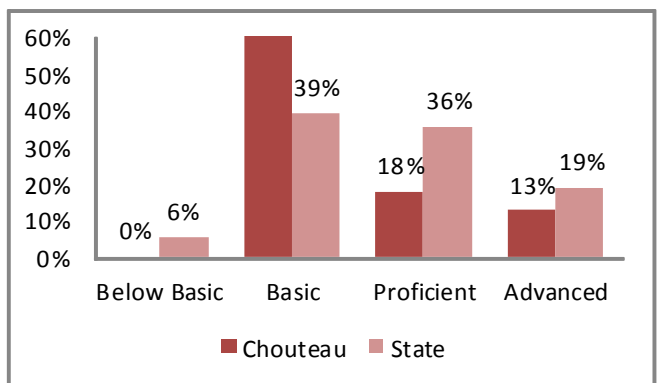
4th Grade Mathematics



5th Grade Communication Arts

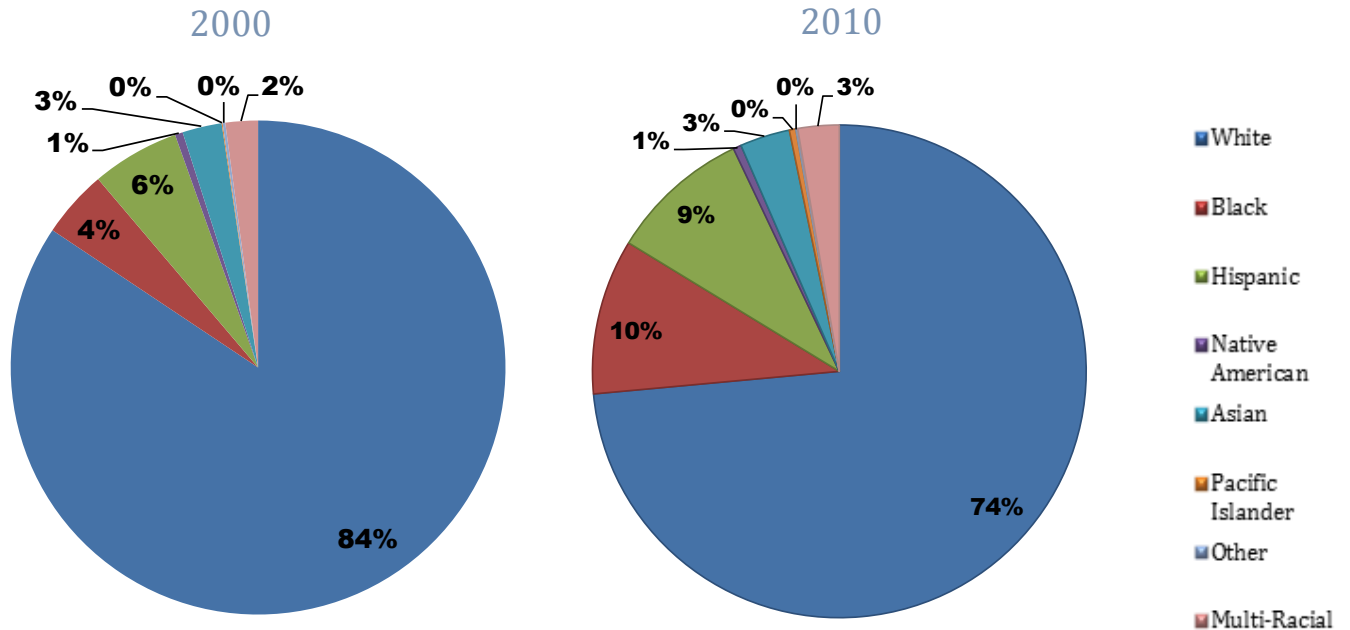


5th Grade Mathematics



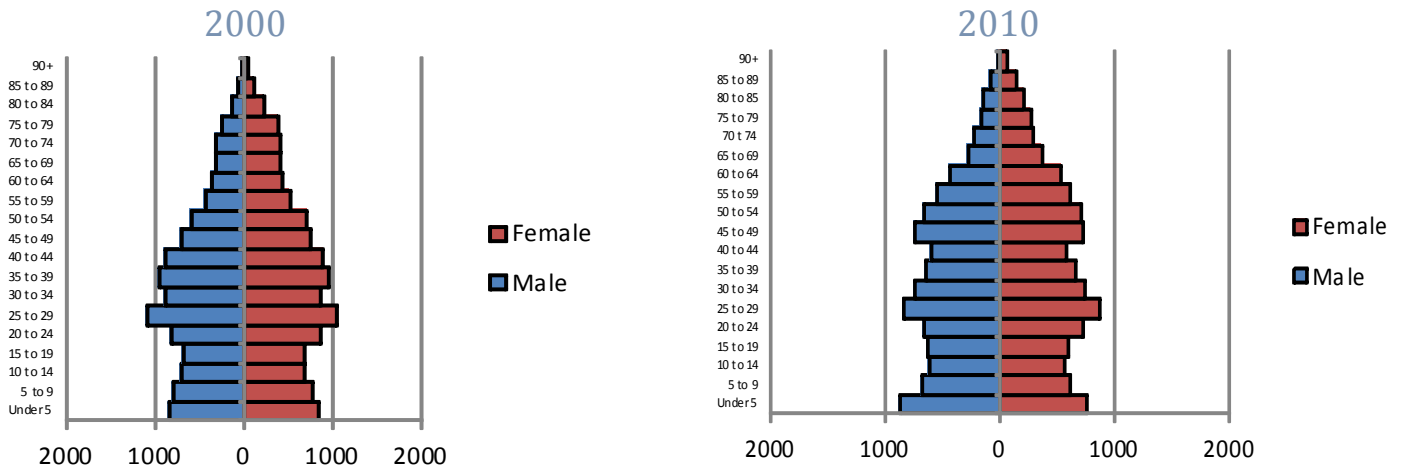
Demographics

Race



Source: U.S. Census Bureau

Age by Sex



Source: U.S. Census Bureau

Family Type with Related Children

	2000	2010	% Change
Total Population	22,458	15,809	-30%
Total Families	5,864	5,364	-9%
Married Families	4,059	3,393	-16%
With Children Under Age 18	1,817	1,476	-19%
Single Father Families	428	534	25%
With Children Under Age 18	259	331	28%
Female Single Parent Families	1,377	1,436	4%
With Children Under Age 18	987	989	0%

Source: U.S. Census Bureau

Economy

	Chouteau	Clay County
Median Income	\$47,038	\$58,560
Unemployment Rate	6.8%	3.5%

Poverty

	Chouteau	Clay County
2000	9.3%	5.5%
2010	11.0%	7.8%

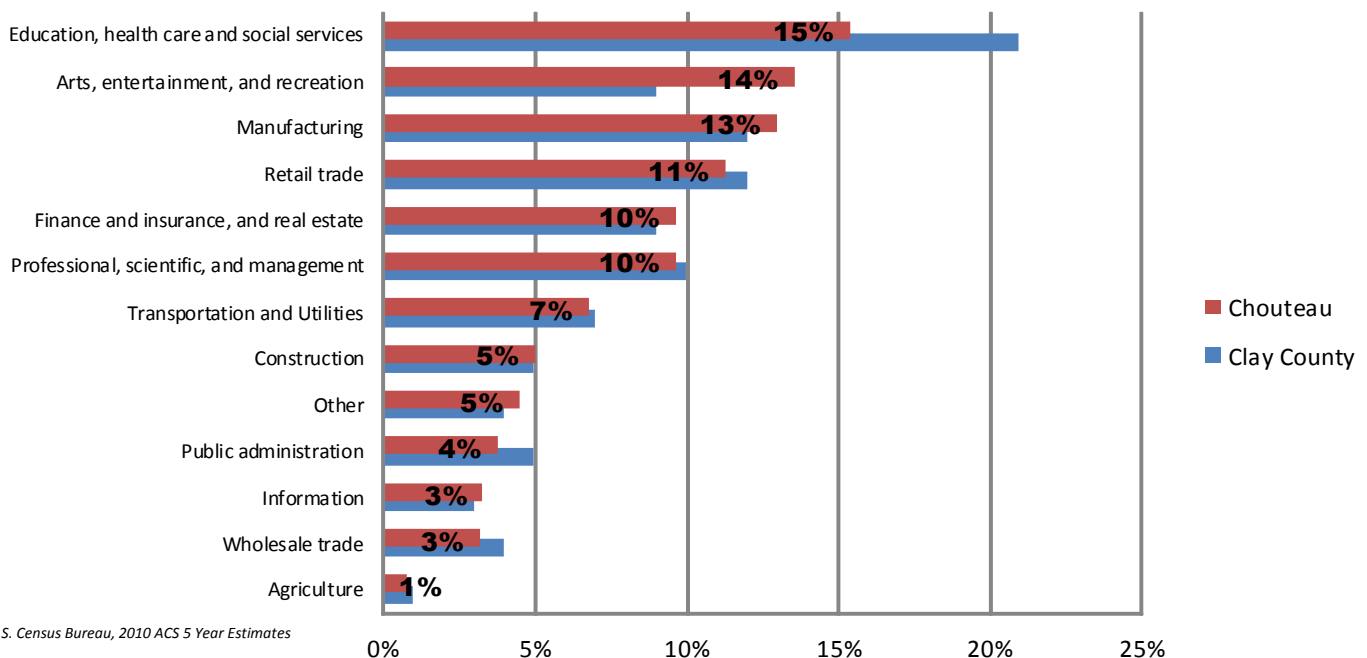
2010 Poverty Thresholds, Selected Family Types		
Single Individual	Under 65	\$ 11,344
	65 years and Older	\$ 10,458
Single Parent	One Child	\$ 15,030
	Two Children	\$ 17,568
	No Children	\$ 14,602
Two Adults	One Child	\$ 17,552
	Two Children	\$ 22,113
	Three Children	\$ 26,023

U.S. Census Bureau, 2010 ACS 5 Year Estimates

Note: The United States determines the official poverty rate using poverty thresholds that are issued each year by the Census Bureau. The thresholds represent the annual amount of cash income minimally required to support families of various sizes. A family is counted as poor if its pretax money income is below its poverty threshold. Money income does not include noncash benefits such as public housing, Medicaid, employer-provided health insurance and food stamps.

Source: National Poverty Center

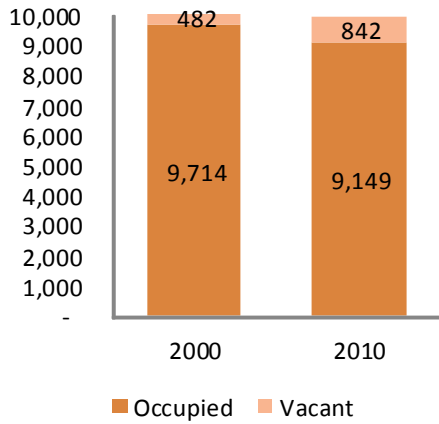
Employment by Industry



U.S. Census Bureau, 2010 ACS 5 Year Estimates

Housing

Vacant Houses



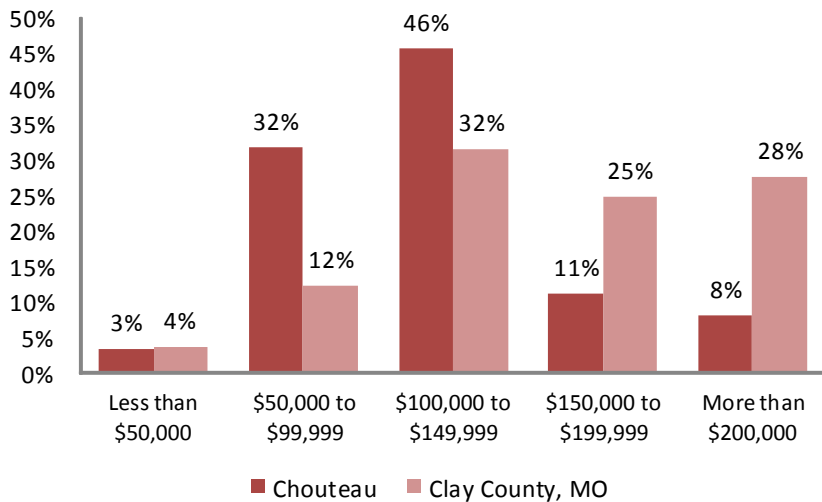
Source: U.S. Census, 2000, 2010

Vacancy Rate

	2000	2010
Chouteau	4.7%	7.1%
Clay County	8.4%	7.1%

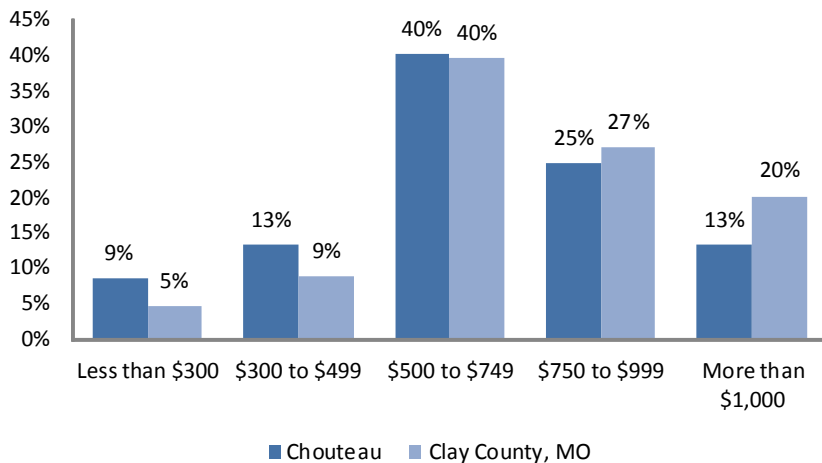
Source: U.S. Census, 2000, 2010

Home Values



Source: U.S. Census, 2010 ACS 5 Year Estimates

Gross Rent



Source: U.S. Census, 2010 ACS 5 Year Estimates

Housing Characteristics	2000 to 2010 Change
Housing Units	-1%
Tenure Owner Renter	-26% 11%
Units Moved into Previous Five Years	-53%
Age of Housing Stock	2010 Percent
Less than 5 Years	4%
Less than 10 Years	10%
Less than 20 Years	19%
Less than 30 Years	28%
Less than 40 Years	43%
More than 50 Years	57%

Source: U.S. Census, 2010 ACS 5 Year Estimates

Community Resources

Parks

		Acres
Anita B. Gorman Park	N. Holmes St. at NE Vivion Rd., Kansas City, MO	45.79
Big Shoal Greenway	NE 56th St., from N. Antioch to Tornton's Mill Creek, Kansas City, MO	103.08
Buckeye Greenway	MO Hwy 210 and N. Brighton, Kansas City, MO	72.4
Chaumiere Woods	NE 43rd St. and N. Indiana Ave., Kansas City, MO	15.4
Chouteau Greenway	NE 38th St. to NE 43rd St., Kansas City, MO	38.71
Chouteau Park	NE 42nd St. and Chouteau Trfwy, Kansas City, MO	7.38
Cooley Park	N. Antioch Rd. and Winn Rd., Kansas City, MO	18.26
Hidden Valley Park	NE Russell Rd. and N. Bennington Ave., Kansas City, MO	193.2
Lakewood Greenway	I 35 to Penguin Park, Kansas City, MO	63.55
North Hills Park	South of NE 36th St. and N. Wayne Ave., Kansas City, MO	14.5
Penguin Park	NE Vivion Rd. and N. Norton Ave., Kansas City, MO	3.42
Prather Park	Prather Park, Kansas City, MO	3.7
Riverfront Park	Riverfront Rd. and N. Monroe Ave., Kansas City, MO	0.63
Riverview Greenway	NE 32nd St. and N. Holmes Rd., Kansas City, MO	44.55
Rock Creek Park	Byers Ave. and N. Antioch Rd., Kansas City, MO	15.78
Sunset Park	N. Garfield Ave. from NE 35th St. to NE 34th Terr., Kansas City, MO	27.98
Winwood Park	NE 44th St. and N. Cypress Ave., Kansas City, MO	18.95

Source: Kansas City, MO Dept. of Parks and Recreation

Food Pantries

AVONDALE UNITED METHODIST CHURCH	3101 NE Winn Road
SAINT GABRIEL ARCHANGEL CATHOLIC CHURCH	4737 N. Cleveland
WINNWOOD BAPTIST CHURCH	4513 N. Jackson Avenue

Source: United Way of Greater Kansas City

Thrift Store

HABITAT FOR HUMANITY RESTORE - KANSAS CITY	4701 Deramus
--	--------------

Source: United Way of Greater Kansas City

Community Resources

Churches

Antioch Community Church	4805 NE Antioch Rd	Kansas City	MO	64119
Avondale United Methodist	3135 NE Winn Rd.	Kansas City	MO	64116
Avondale United Methodist Chr	3101 NE Winn Rd	Kansas City	MO	64117
Berean Apostolic Worship Ctr	3025 NE Jaudon St.	Kansas City	MO	64117
Beth Haven Church	4810 N Elmwood Ave	Kansas City	MO	64119
Bethel United Church Of Christ	4900 NE Parvin Rd	Kansas City	MO	64117
Bible Fellowship Ctr	501 Randolph Rd	Randolph	MO	64161
Church Of Christ	2026 NE Vivion Rd	Kansas City	MO	64188
Church Of God Of Prophecy	4907 N Brighton Ave	Kansas City	MO	64119
Church Of The Good Shepherd	4947 NE Chouteau Dr	Kansas City	MO	64119
Faith Academy	4300 N Corrington Ave	Kansas City	MO	64117
Faith Community Church	3500 Prather Rd	Kansas City	MO	64116
Gospel Center Ministries	2900 NE Cates St	Kansas City	MO	64117
Grace Baptist Church	3101 NE Vivion Rd	Kansas City	MO	64119
Harvest Church-Leadership Camp	4300 N. Corrington Ave.	Kansas City	MO	64117
Immanuel Presbyterian Church	3800 NE Parvin Rd	Kansas City	MO	64117
Jesus Name Pentecostal Church	5225 N Brighton Pl	Kansas City	MO	64119
Kansas City Korean Baptist Church	3817 N. Wayne Ave.	Kansas City	MO	64116
Metro Church Of Kansas City	4735 N Brighton Ave	Kansas City	MO	64117
Metro Life Church	4300 NE Parvin Rd	Kansas City	MO	64117
Northland Christian Church	6120 NE 48th St	Kansas City	MO	64119
Randolph Baptist Church	500 Randolph Rd	Randolph	MO	64161
Rock Creek Fellowship AOG	2608 Koch St	Kansas City	MO	64117
Rockcreek Fellowship	2608 Koch St	Kansas City	MO	64117
Salvation Army	4300 NE Parvin Rd	Kansas City	MO	64117
Sherwood Bible Church	4900 N Norton Ave	Kansas City	MO	64119
St Gabriel's Church	4737 N Cleveland Ave	Kansas City	MO	64117
St Luke Presbyterian Church	4301 NE Vivion Rd	Kansas City	MO	64119
St Patrick's Church	1357 NE 42nd Ter	Kansas City	MO	64116
Trinity Christian Ctr Assembly	5005 N Brighton Ave	Kansas City	MO	64119
Victory Free Will Baptist Chr	4041 NE Antioch Rd	Kansas City	MO	64117
Vivion Road Church of Christ	2026 NE Vivion Rd.	Kansas City	MO	64118
Winnwood Baptist Church	4513 N Jackson Ave	Kansas City	MO	64117
Winnwood United Methodist Chr	4406 NE 45th Ter	Kansas City	MO	64117

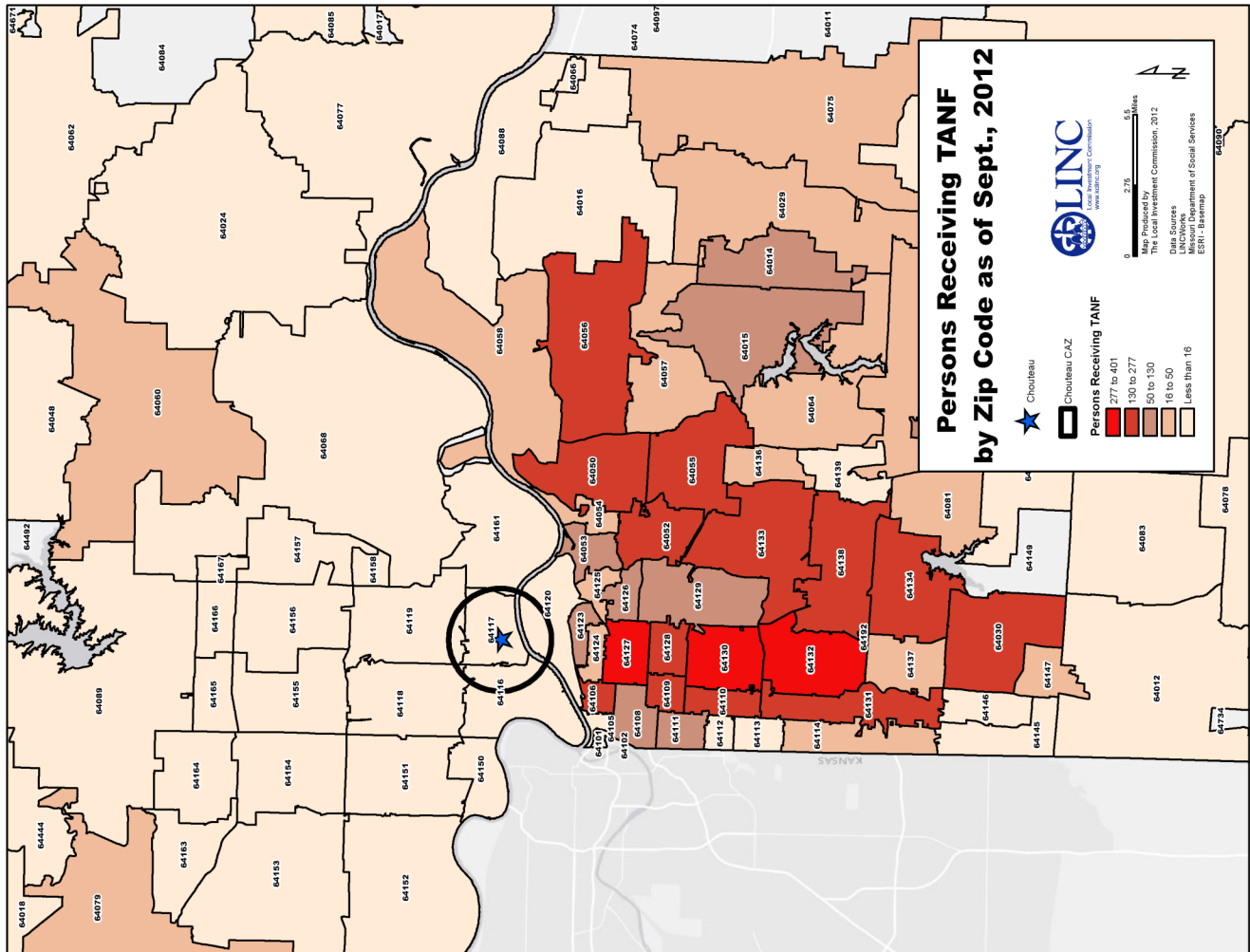
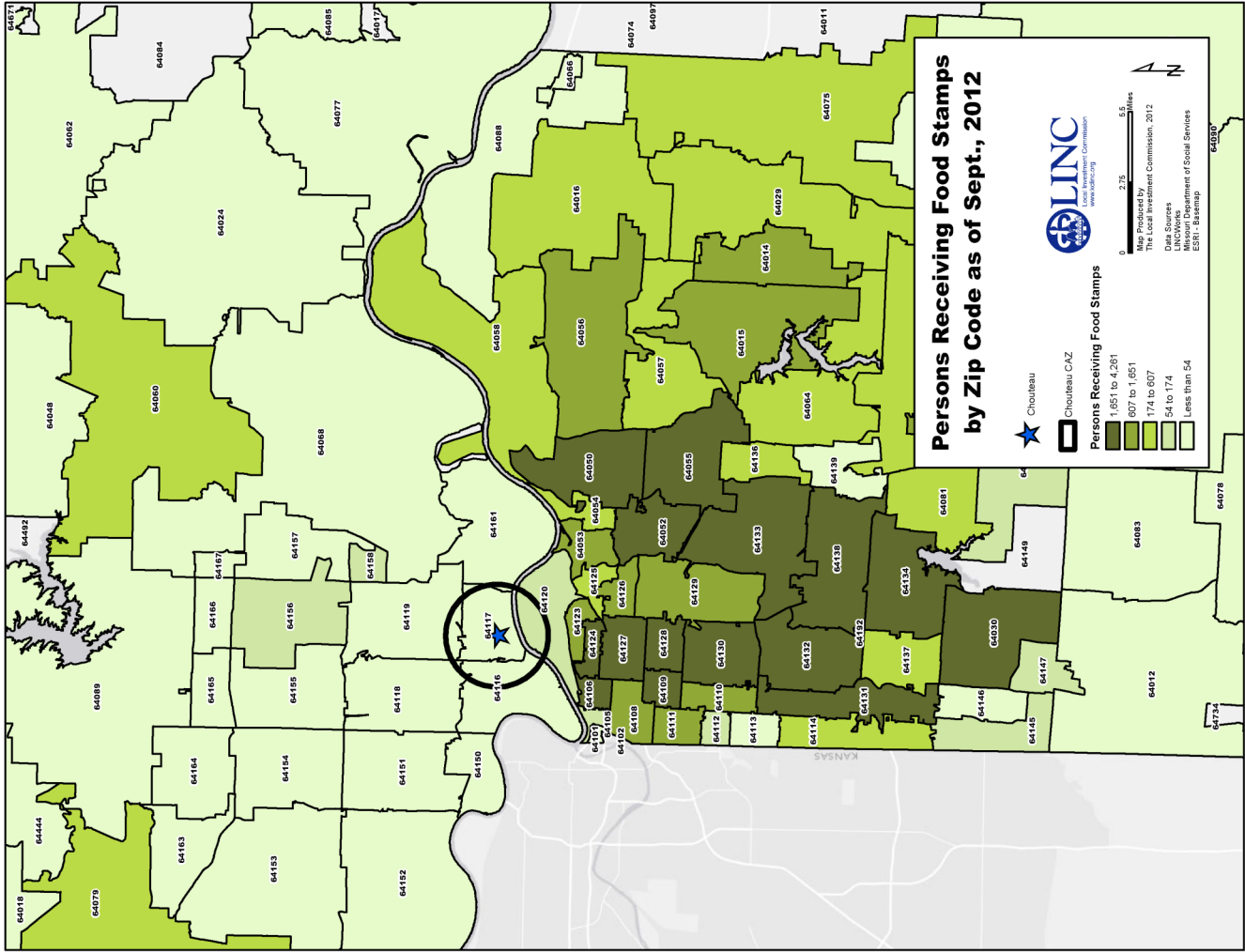
Source: Kansas City Yellowpages

Community Resources

Health Care Facility

Menninger Kansas City	2900 Clay Edwards Dr
North KC Hospital	2800 Clay Edwards Dr
Tri-County Mental Health Services (Lebedun Center)	5844 NE Russell Rd

Source: Missouri Department of Health and Senior Services



Data Resources

City of Kansas City, Mo.

Clay County, Mo.

Kansas City, Mo. Department of Parks and Recreation

Kansas City Free Health Clinic

Kansas City Police and Fire Department

Mid-America Regional Council

Missouri Department of Elementary and Secondary Education

Missouri Department of Social Services

Missouri Department of Health and Human Services

North Kansas City Public School District

United States Census Bureau

United States Department of Housing and Urban Development

United States Department of Labor

United Way of Greater Kansas City

University of Missouri-Kansas City Center for Economic Information

University of Michigan National Poverty Center

Site Book developed By:
Local Investment Commission (LINC)
2012

**All maps, photographs, and tables were developed and/or are property of LINC, unless otherwise noted,
and must be cited for external use.**

For more information on LINC, please visit:
www.kclinc.org