

Woodland

Early Learning Community School

Data Book **November 2013**

A review and analysis of the community surrounding the Caring Communities site located at **Woodland Early Learning Community School** in Kansas City, Mo.



Introduction

About Caring Communities

Caring Communities was developed by the Local Investment Commission (LINC) to fulfill the role once played by the courthouse square: a place where the community gathers together, shares ideas, and holds neighborhood events. The growth of Caring Communities reflects increasing national interest in creating “community schools.”

The LINC Caring Communities effort, which began in 1992, has grown to 80 sites in seven school districts in Kansas City and Jackson County, MO. LINC’s school district partners include Kansas City, Independence, Fort Osage, North Kansas City, Hickman Mills, Grandview and Center. Other partners include charter schools, local government, state agencies, and community organizations.

About This Book

The Woodland Early Learning Community School Data Book is intended to provide useful information for decision-makers of the Woodland community — parents, neighbors, site council members, staff and the general public. We hope the facts, figures and resources contained in this book will help these decision-makers to better understand their neighborhoods and identify needs and opportunities for better coordination of services. We hope this book will help build on the success of Caring Communities and help it thrive in the future.

For additional copies of this book, visit www.kclinc.org/sitebooks

Woodland Caring Communities

Established 2013

711 Woodland Ave.
Kansas City, MO 64106

What is a Community School?

A community school is both a place and a set of partnerships between the school and other community stakeholders which leads to improved student learning, stronger families and healthier communities. Community schools are open to everyone—all day, including evenings and weekends. Community-based organizations or public institutions often work as lead agencies in community schools, helping to mobilize community assets and support students success.

Coalition for Community Schools

www.communityschools.org

Community Analysis Zone (CAZ)

The Community Analysis Zone (CAZ) for the Woodland community was established using **Woodland Early Learning Community School** as a reference point and follows the boundary of the Historic Northeast neighborhood (the blue shaded area in the map at right).

The CAZ allows for analysis of data about residents, neighborhoods and services within the community served by the Caring Communities site.

For the purpose of this book the boundaries of the Woodland CAZ and the “Woodland community” are the same, and the terms “CAZ” and “community” are used interchangeably.

Data for the site book was obtained from a number of resources including but not limited to the City of Kansas City, Mo.; U.S. Census Bureau; Jackson County, Mo.; Missouri Department of Elementary and Secondary Education; Missouri

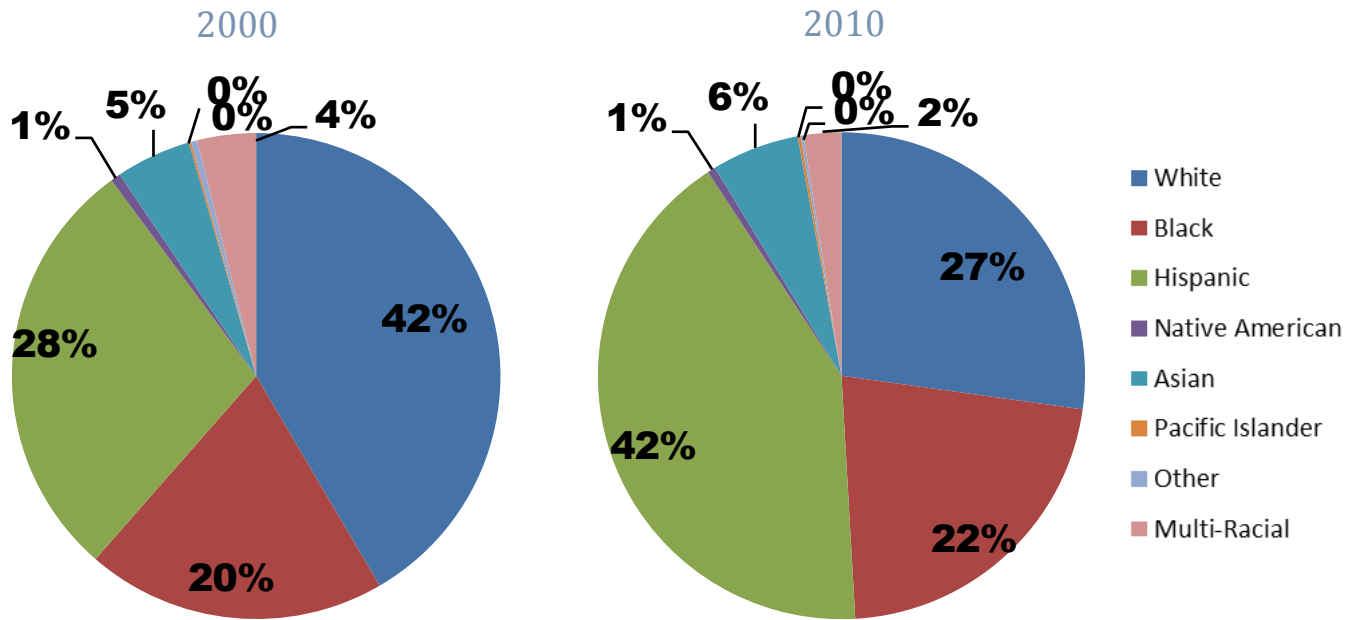
Department of Health and Senior Services; United Way of Greater Kansas City; Missouri Department of Social Services; University of Missouri-Kansas City Center for Economic Information; and University of Michigan National Poverty Center.

Community data was analyzed by census tract within the CAZ (red boundaries). Census tracts are small, relatively permanent statistical subdivisions of a county delineated by local participants as part of the U.S. Census Bureau's Participant Statistical Areas Program. The U.S. Census Bureau delineated census tracts in situations where no local participant existed or where local or tribal governments declined to participate. Census tracts generally have between 1,500 and 8,000 people, with an optimum size of 4,000 people. (Source: U.S. Census Bureau).



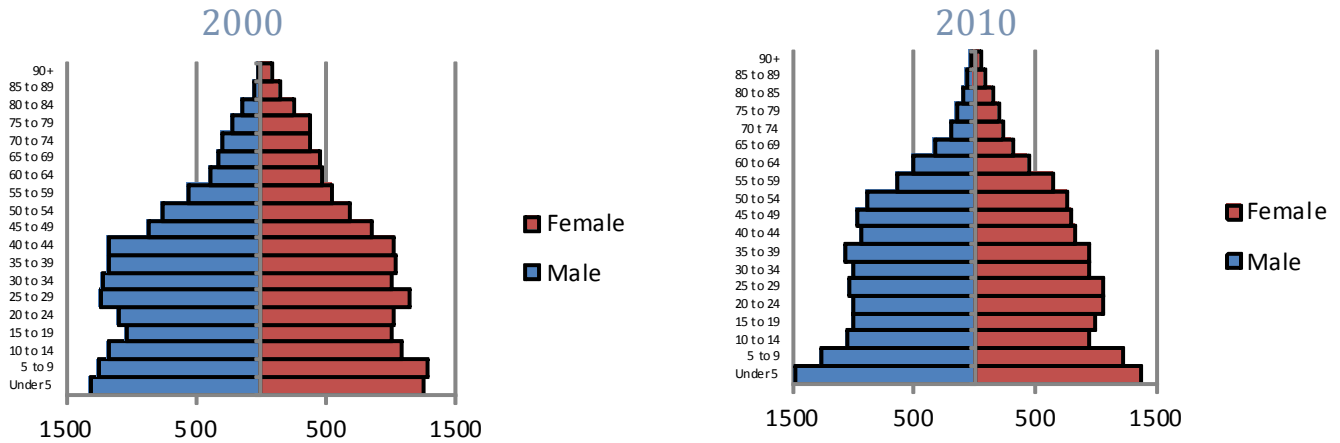
Demographics

Race



Source: U.S. Census Bureau

Age by Sex



Source: U.S. Census Bureau

Family Type with Related Children

	2000	2010	% Change
Total Population	28,392	26,720	-6%
Total Families	6,298	5,678	-10%
Married Families	3,614	2,956	-18%
With Children Under Age 18	2,041	1,795	-12%
Single Male Households	726	809	11%
With Children Under Age 18	390	472	21%
Single Female Households	1,958	1,913	-2%
With Children Under Age 18	1,464	1,408	-4%

Source: U.S. Census Bureau

Economy

	Woodland	Jackson County
Median Income	\$26,191	\$46,874
Unemployment Rate	16.6%	9.2%

Source: 2011 5-Year American Community Survey

Persons in family/household	Poverty guideline
1	\$11,490
2	15,510
3	19,530
4	23,550
5	27,570
6	31,590
7	35,610
8	39,630
For families/households with more than 8 persons,	

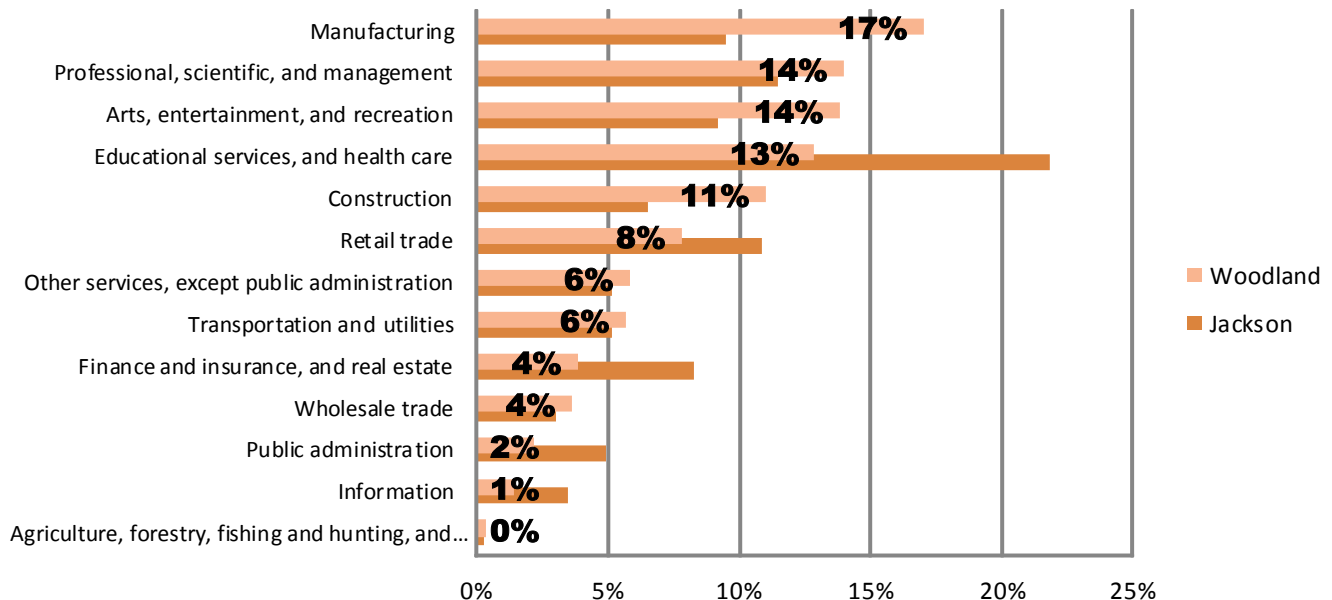
Persons in Poverty

	Woodland	Jackson County
2000	28.2%	11.9%
2011	37.3%	16.5%

Source: 2000 US Census, 2011 5-Year American Community Survey

Note: Poverty Guidelines are issued every year by the U.S. Department of Health and Human Services. The guidelines are a simplified version of the poverty thresholds primarily used in determining eligibility for certain federal programs. Poverty guidelines are adjusted for family size and location. The above guidelines are for the 48 contiguous state and the District of Columbia. (source: University of Wisconsin-Madison, Institute for Research on Poverty)

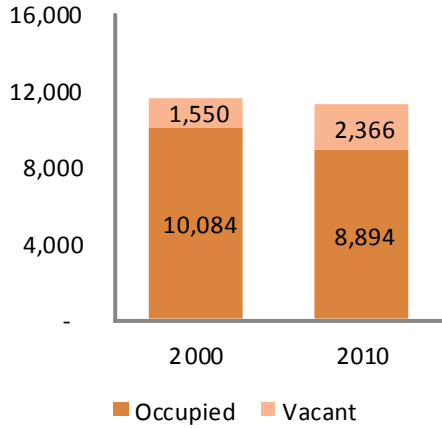
Employment by Industry



U.S. Census Bureau, 2011 ACS 5 Year Estimates

Housing

Vacant Houses



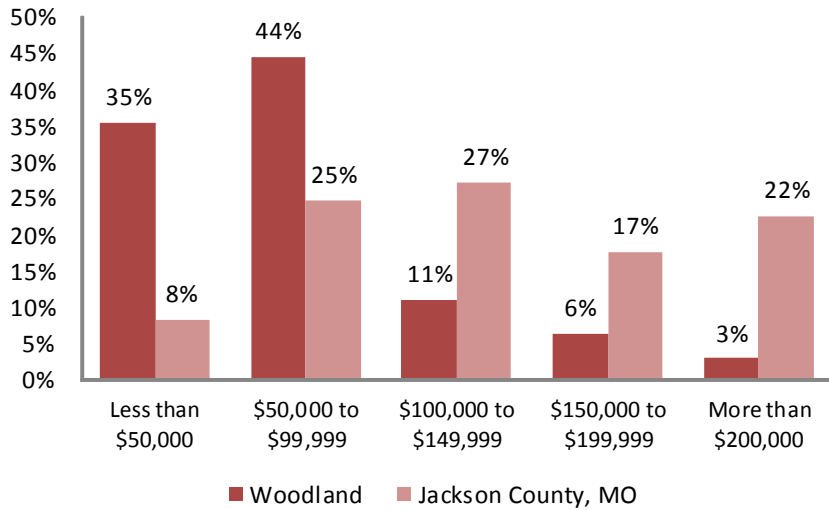
Source: 2000, 2010 US Census

Vacancy Rate

	2000	2010
Woodland	13.3%	19.5%
Jackson County	7.6%	12.0%

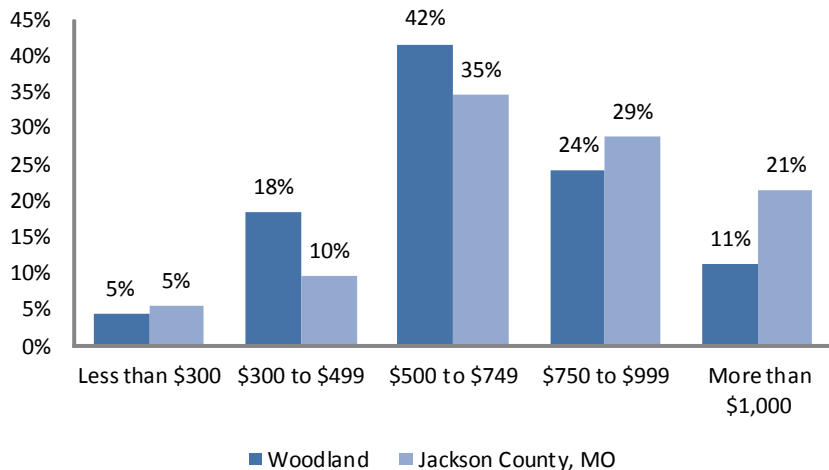
Source: 2000, 2010 US Census

Home Values



Source: U.S. Census, 2011 ACS 5 Year Estimates

Gross Rent



Source: U.S. Census, 2011 ACS 5 Year Estimates

Housing Characteristics	2000 to 2010 Change
Housing Units	-3%
Tenure Owner Renter	-24% 0%
Units Moved into Previous Five Years	-26%
Age of Housing Stock	2011 Percent
Less than 5 Years	0%
Less than 10 Years	1%
Less than 20 Years	3%
Less than 30 Years	5%
Less than 40 Years	11%
More than 50 Years	89%

Source: 2000 US Census, 2011 5-Year American Community Survey

Community Resources

Parks

Belvidere Park	Independence Ave. & Lydia	Kansas City	MO
Budd Park	St. John Ave & Brighton Ave	Kansas City	MO
Freeway Park	E 14th St & Indiana Ave	Kansas City	MO
Harmony Park	E 10th St. & Agnes Ave	Kansas City	MO
Independence Plaza	Independence Blvd & Park Ave	Kansas City	MO
Indian Mound	Gladstone Blvd & Belmont Blvd (In Kessler Park)	Kansas City	MO
Kessler Park	Paseo to Belmont Blvd, North Bluffs	Kansas City	MO
Lafayette Traber Garden	Woodland Ave & Pendleton St	Kansas City	MO
Lykins Square	8th St & Myrtle Ave	Kansas City	MO
Maple Park	Maple Blvd & Lexington Ave.	Kansas City	MO
Prospect Plaza Park	12th St. & Prospect Ave	Kansas City	MO
Sheffield Park	12th St. & Winchester Ave.	Kansas City	MO
The Concourse	Benton Blvd & St. John Ave (In Kessler Park)	Kansas City	MO

Source: City of Kansas City Dept. of Parks and Recreation

Food Pantries

CALVARY TEMPLE - HELPING HANDS	5612 St. John	Kansas City	MO	64123
CITY UNION MISSION - COMMUNITY ASSISTANCE	1310 Wabash Ave.	Kansas City	MO	64127
DON BOSCO FAMILY SUPPORT CENTER	520 Garfield	Kansas City	MO	64124
FATHER HIX SOCIAL SERVICES CENTER	309 Benton Blvd.	Kansas City	MO	64124
GRACE UNITED CHURCH	811 Benton Blvd.	Kansas City	MO	64124
INDEPENDENCE AVENUE BAPTIST CHURCH	522 S. Jackson Avenue	Kansas City	MO	64124
LUTHERAN CHURCH OF OUR REDEEMER	711 Benton Blvd.	Kansas City	MO	64124
NORTHEAST PRESBYTERIAN FOOD PANTRY	301 S. Van Brunt Blvd.	Kansas City	MO	64124
SALVATION ARMY - BELLEFONTAINE	3013 E. 9th Street	Kansas City	MO	64124

Source: United Way of Greater Kansas City

Homeless Shelters

CITY UNION MISSION - FAMILY & YOUTH CENTER	1310 Wabash Avenue	Kansas City	MO	64127
--	--------------------	-------------	----	-------

Source: United Way of Greater Kansas City

Soup Kitchens

CALVARY TEMPLE - HELPING HANDS	5612 St. John	Kansas City	MO	64123
LUTHERAN CHURCH OF OUR REDEEMER	711 Benton Blvd.	Kansas City	MO	64124
MICAH MINISTRY-INDEPENDENCE BLVD. CHRISTIAN CHURCH	606 Gladstone Boulevard	Kansas City	MO	64124
NORTHEAST HOPE	5001 Independence Ave	Kansas City	MO	64124

Source: United Way of Greater Kansas City

Community Resources

Health Centers

Samuel U. Rodgers Health Center - Main Site	825 Euclid	Kansas City	MO	64124
Samuel U. Rodgers Health Center - East	2100 E 9th St	Kansas City	MO	64124

Source: Missouri Department of Health and Senior Services

Churches

Abundant Life Apostolic Church	723 Olive St	Kansas City	MO	64124
Bales Baptist Church	3414 E 12th St	Kansas City	MO	64117
Bethany Baptist Church	2216 E. 13th St.	Kansas City	MO	64127
Bethaney Baptist Church	2216 E 13th St	Kansas City	MO	64127
Bethany Baptist Church	141 N Lawndale Ave	Kansas City	MO	64123
Bethel Mssnry Baptist Church	2216 E 13th St	Kansas City	MO	64127
Bethel Tabernacle Assembly	4233 Independence Ave	Kansas City	MO	64124
Budd Park Christian Church	4925 Saint John Ave	Kansas City	MO	64123
Calvary Temple	5612 Saint John Ave	Kansas City	MO	64123
Calvary Temple Assembly Of God	5607 Saint John Ave	Kansas City	MO	64123
Camino Verdad Y Vida United	541 Elmwood Ave	Kansas City	MO	64124
Children's Memorial Lutheran	5001 Independence Ave	Kansas City	MO	64124
Church Of The Nazarene	4300 Independence Ave	Kansas City	MO	64124
City Union Mission Shelter	1310 Wabash Ave	Kansas City	MO	64127
Community of Christ	436 Norton Ave.	Kansas City	MO	64124
Cristo LA Roca Pentecostal Chr	5800 Peery Ave	Kansas City	MO	64126
Eastminster Presbyterian Chr	217 S Benton Blvd	Kansas City	MO	64123
Emmanuel Baptist Church	920 Olive St	Kansas City	MO	64127
Eternal Life Church	2600 E 9th St	Kansas City	MO	64124
Friendly Assembly Of God	1215 Benton Blvd	Kansas City	MO	64127
Glad Tidings Chapel	701 Prospect Ave	Kansas City	MO	64124
Gospel Lighthouse Church	1300 Askew Ave	Kansas City	MO	64127
Grace Church of the Nazarene	4300 Independence Ave.	Kansas City	MO	64124
Grace United Church	801 Benton Blvd.	Kansas City	MO	64124
Greater Holy Temple Church	2310 E 10th St	Kansas City	MO	64127
Holy Cross Catholic Church	5106 Saint John Ave	Kansas City	MO	64123
Independence Avenue Baptist	522 Jackson Ave	Kansas City	MO	64124
Independence Boulevard Chrstn	606 Gladstone Ave	Kansas City	MO	64124
Jehovah's Witnesses	4505 Saint John Ave	Kansas City	MO	64123
Latin American SDA Church	500 Chelsea Ave	Kansas City	MO	64124
Maranatha Church	1235 College Ave	Kansas City	MO	64124
Martin Temple Church Of God	905 Olive St	Kansas City	MO	64127
Melrose United Methodist Chr	200 N Bales Ave	Kansas City	MO	64123
Metro Lighthouse Apostolic Chr	2637 E 9th St	Kansas City	MO	64124
New Horizon Baptist Church	6001 Gladstone Blvd.	Kansas City	MO	64123
Northeast Presbyterian Church	301 Van Brunt Blvd	Kansas City	MO	64124

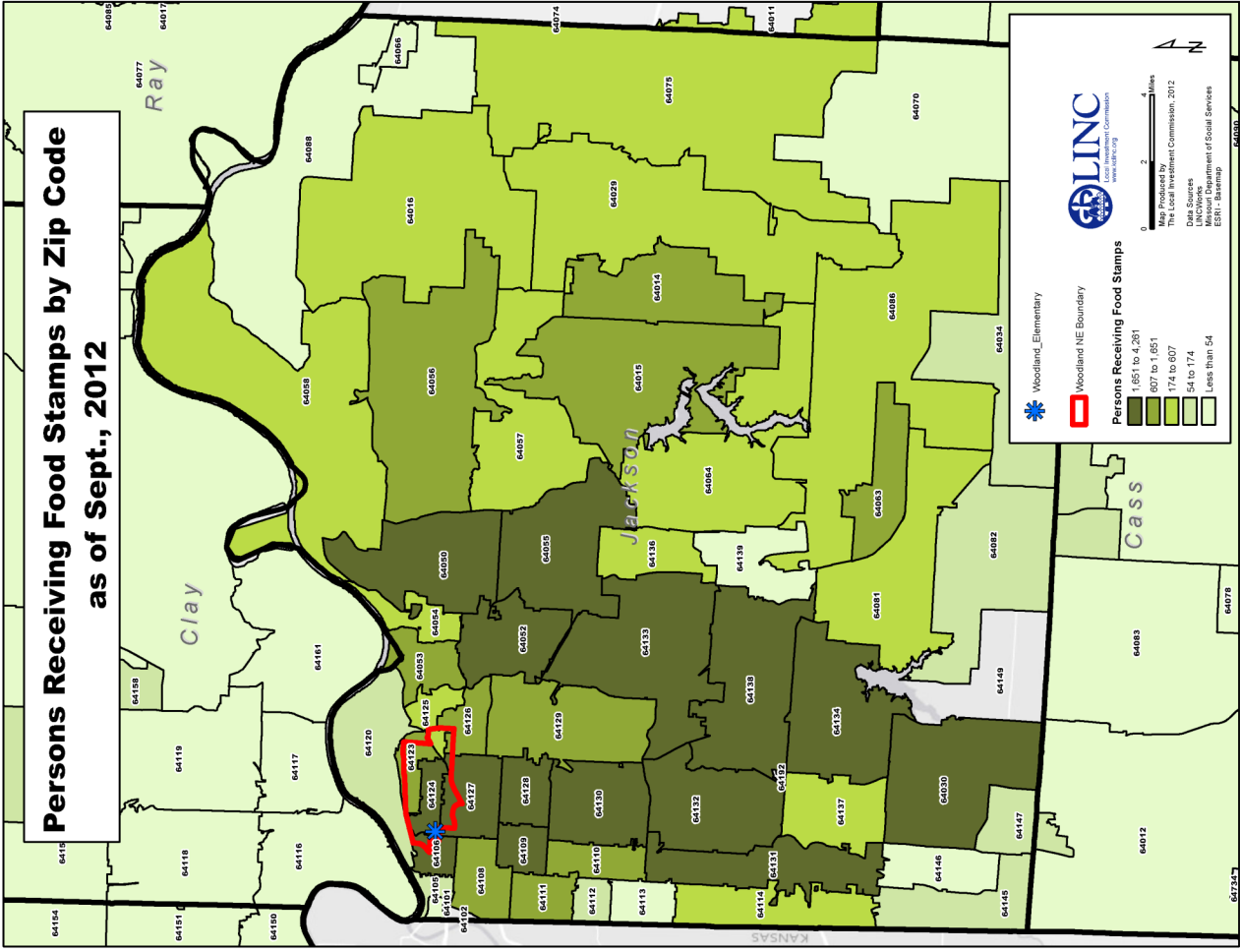
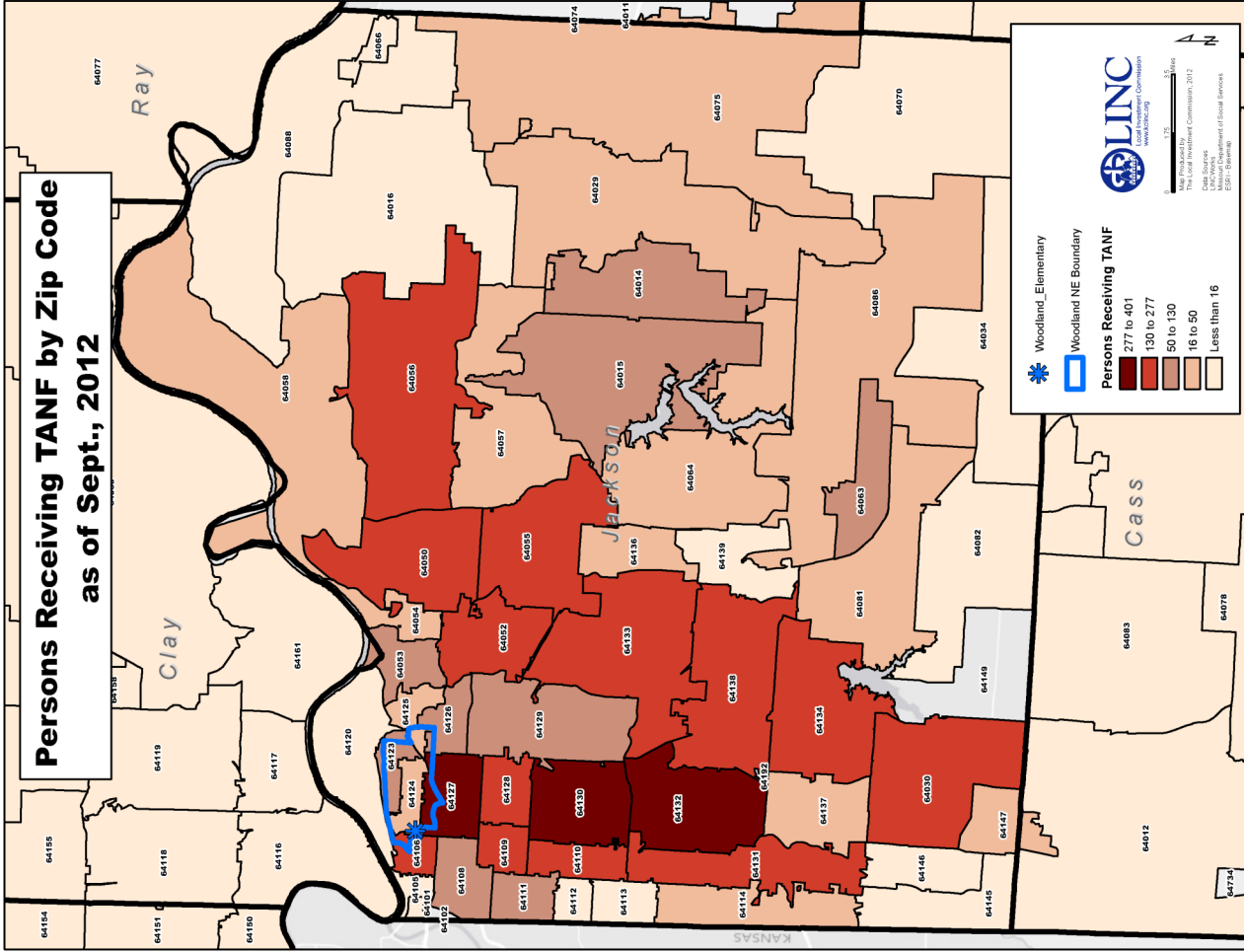
Source: Yellow Pages

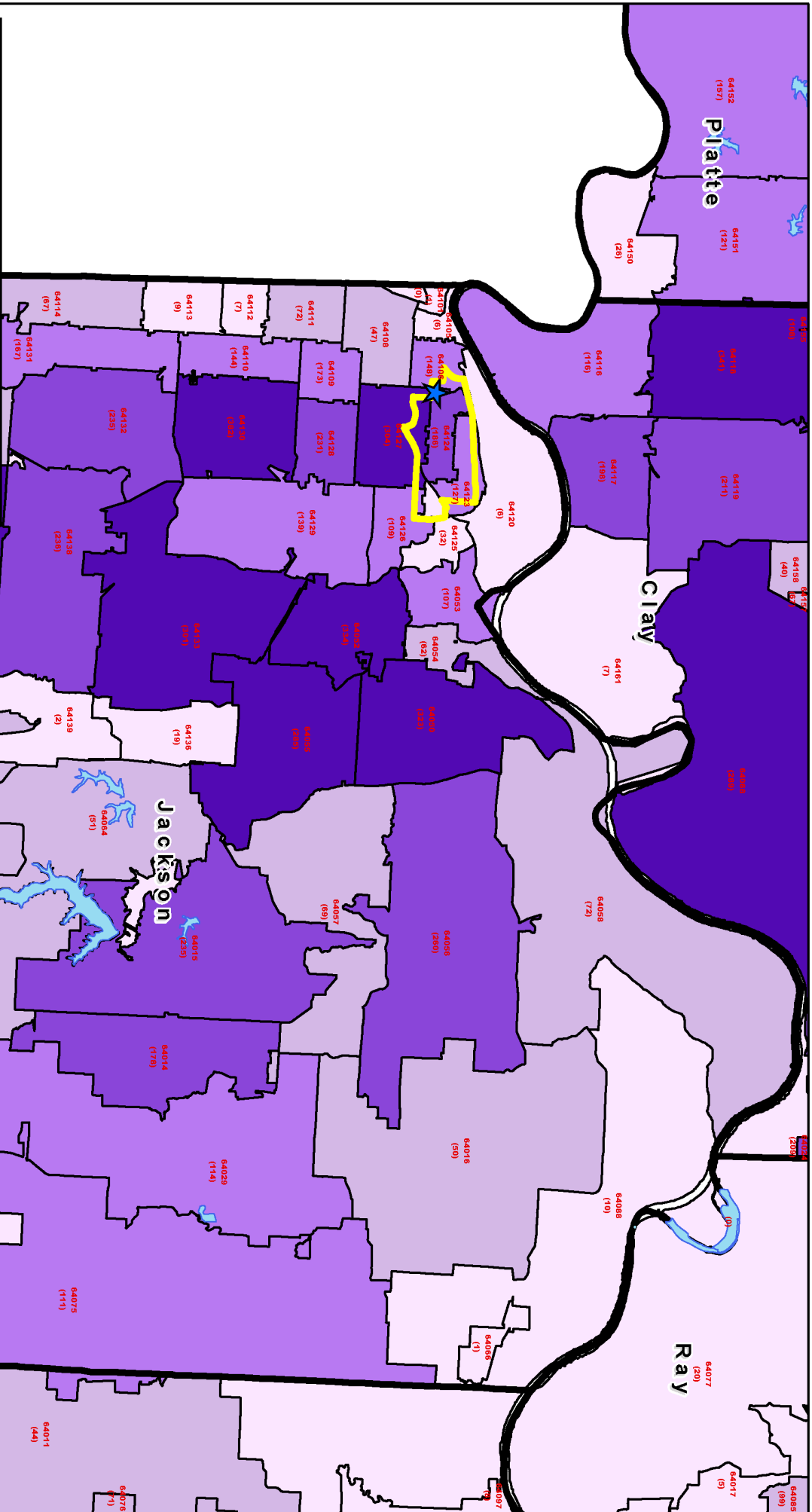
Community Resources

Churches—continued

Our Lady Of Peace Catholic Chr	1029 Bennington Ave	Kansas City	MO	64126
Our Redeemer Lutheran Church	711 Benton Blvd	Kansas City	MO	64124
Prince Of Peace Baptist Chr	6301 E 7th St	Kansas City	MO	64125
Real Truth Seventh Day	6001 Gladstone Blvd	Kansas City	MO	64123
Salvation Army	3013 E 9th St	Kansas City	MO	64124
Sheffield Assembly of God	5700 Winner Rd	Kansas City	MO	64127
St Aloysius Catholic Church	2611 E 11th St	Kansas City	MO	64127
St Anthony's Catholic Church	318 Benton Blvd	Kansas City	MO	64124
St John's Anglican Church	517 Kensington Ave	Kansas City	MO	64124
Our Lady of Peace	1029 Bennington Ave	Kansas City	MO	64126
St Paul Monument Of Faith	133 Van Brunt Blvd	Kansas City	MO	64123
Sudanese Community Church	217 S. Benton Blvd.	Kansas City	MO	64123
Victory Temple Church	3301 E 12th St	Kansas City	MO	64127
White Avenue Parsonage	428 Oakley Ave	Kansas City	MO	64123
White Avenue United Methodist	6002 Anderson Ave	Kansas City	MO	64123

Source: Yellow Pages





Total CAIN Reports: Northwest Region

Total Reports

- 261 to 382
- 176 to 260
- 101 to 175
- 36 to 100
- Less than 35

Report Counts

- County Boundary
- Rivers
- Lakes
- Woodland
- Woodland NE Boundary

In map: 13,723**
Total count: 15,150
Max Count: Kansas City
Zip - 64130
382 Reports



Data Resources

City of Kansas City, Mo.

Jackson County, Mo.

Kansas City Free Health Clinic

Kansas City Parks and Recreation Department

Kansas City Public Schools

Mid-America Regional Council

Missouri Department of Elementary and Secondary Education

Missouri Department of Social Services

Missouri Department of Health and Human Services

United States Census Bureau

United States Department of Housing and Urban Development

United States Department of Labor

United Way of Greater Kansas City

University of Missouri-Kansas City Center for Economic Information

University of Michigan National Poverty Center

**Site Data Book developed by:
Local Investment Commission (LINC)
2013**

**All maps, photographs, and tables were developed and/or are property of LINC, unless otherwise noted,
and must be cited for external use.**

**For more information on LINC, please visit:
www.kclinc.org**